



INITIATIVE FOR COFFEE & CLIMATE

climate resilient livelihoods

coffee & climate
enabling effective response

FACTS ABOUT C&C

- **Founded in 2010** as an open partnership of leading coffee companies and development organizations.
- **Phase I (2010-2016)** focused on development, piloting and evaluation of the c&c approach and methodology.
- **Phase II (2016-2019)** focused on upscaling the initiative in the pilot countries and expanding the c&c network.
- **Phase III (2020-2023)** focuses on promoting climate resilient livelihoods and minimizing carbon emissions while enhancing the carbon storage potential in coffee farms and coffee landscapes.

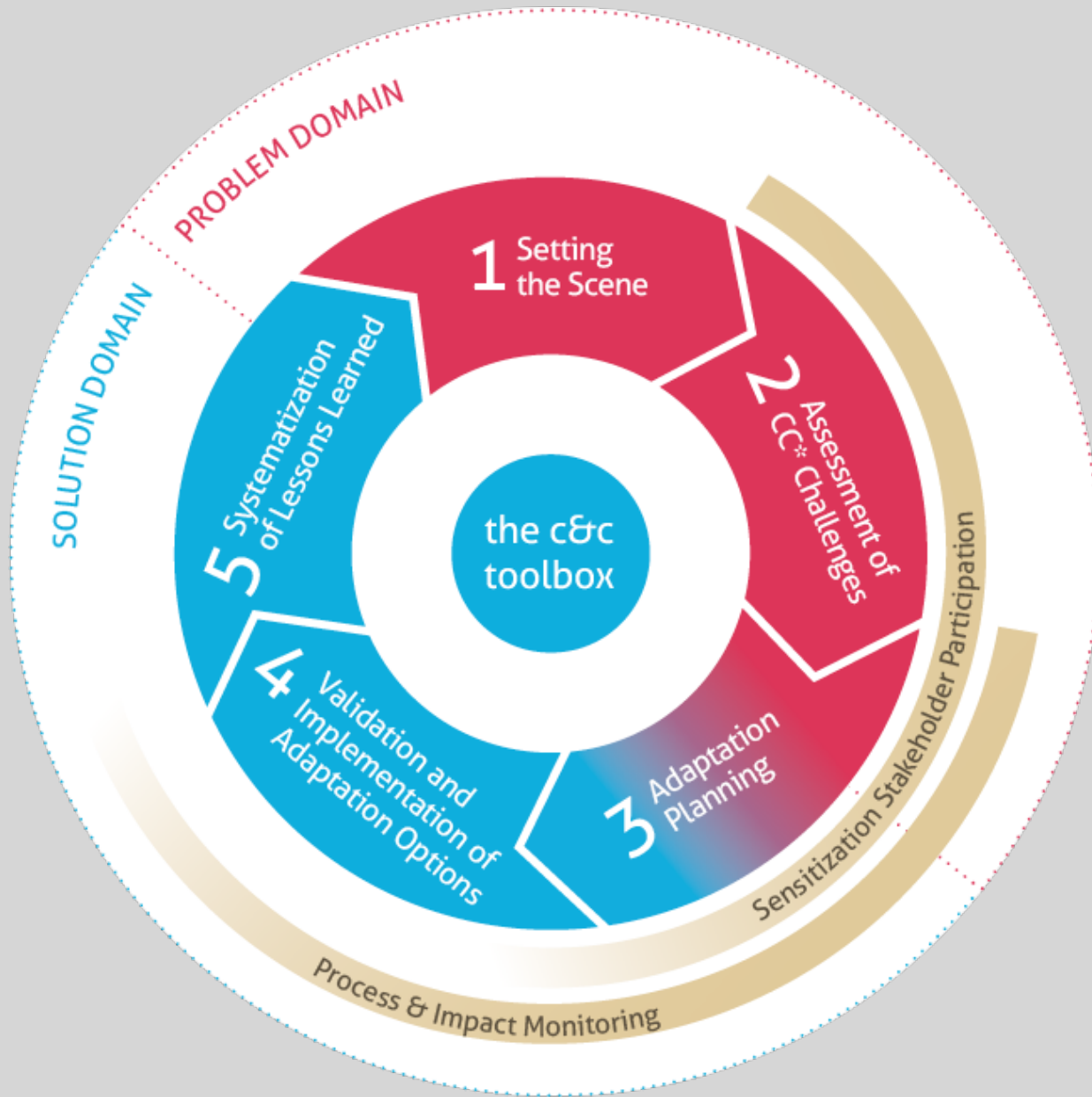
CURRENT FUNDING PARTNERS



IMPLEMENTING PARTNER

Hanns R. Neumann Stiftung





HOW WE WORK

- Through a tested and proven methodology and approach.
- Continued identification and evaluation of suitable locally appropriate adaptation and mitigation options.
- Innovations for climate-smart agriculture.
- Training on climate adaptation and mitigation.
- Facilitation of knowledge exchange about addressing climate change and joint learning.
- Open access to developed tools and practices.

WORK THAT GOES BEYOND AGRONOMY

- Joint-decision making on climate adaptation strategies at household level.
- Food security and income diversification.
- Youth with a business and social perspective.
- Establishment of micro-enterprises related to climate action.
- Training on safe use and handling of agrochemicals.



A RESULT-ORIENTED INITIATIVE

92,000

households
reached with training

Trifinio Region Coffee Rust:
53 % of project families low
impact, 23 % medium impact

70 %

have improved their farm
management

59 % of project families in
Tanzania had increases in yield
(average 166 kg / hectare)

9,000

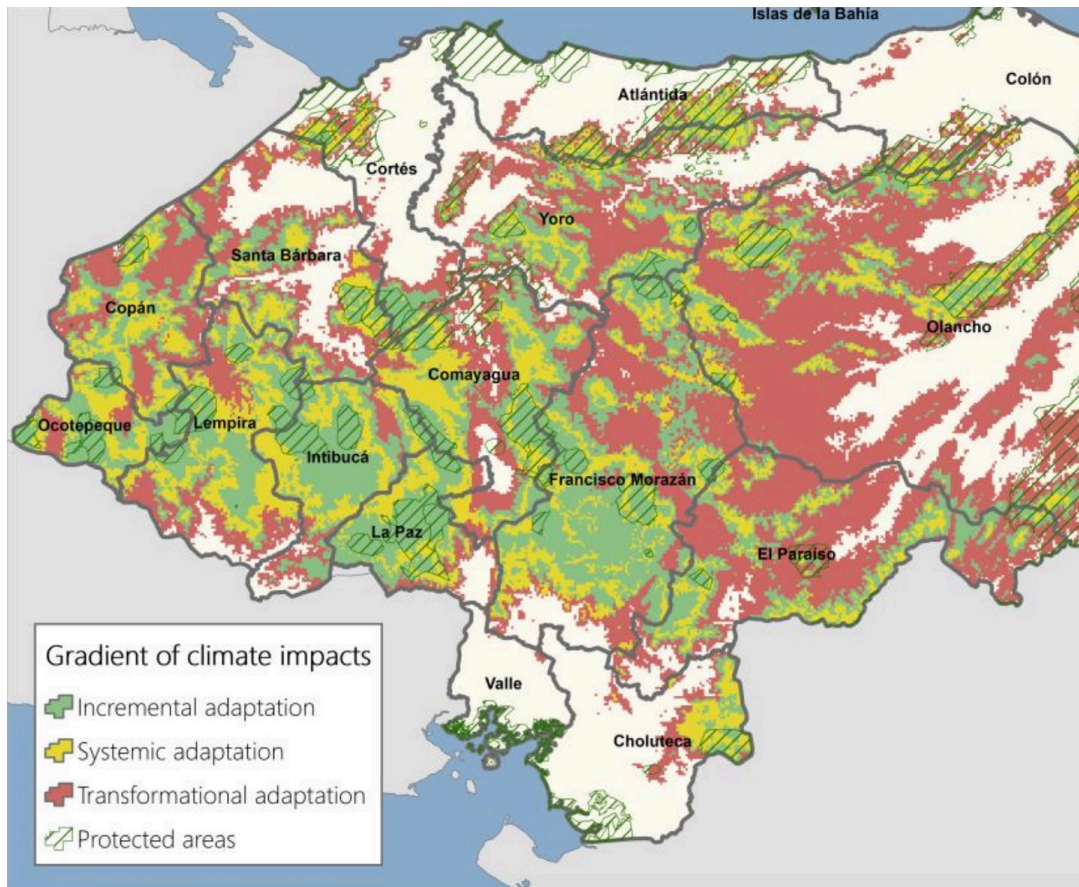
households reached
to improve gender equality

“I learned about what climate
change is and how it affects
coffee production of my
farm”: 82%

POLL RESULTS

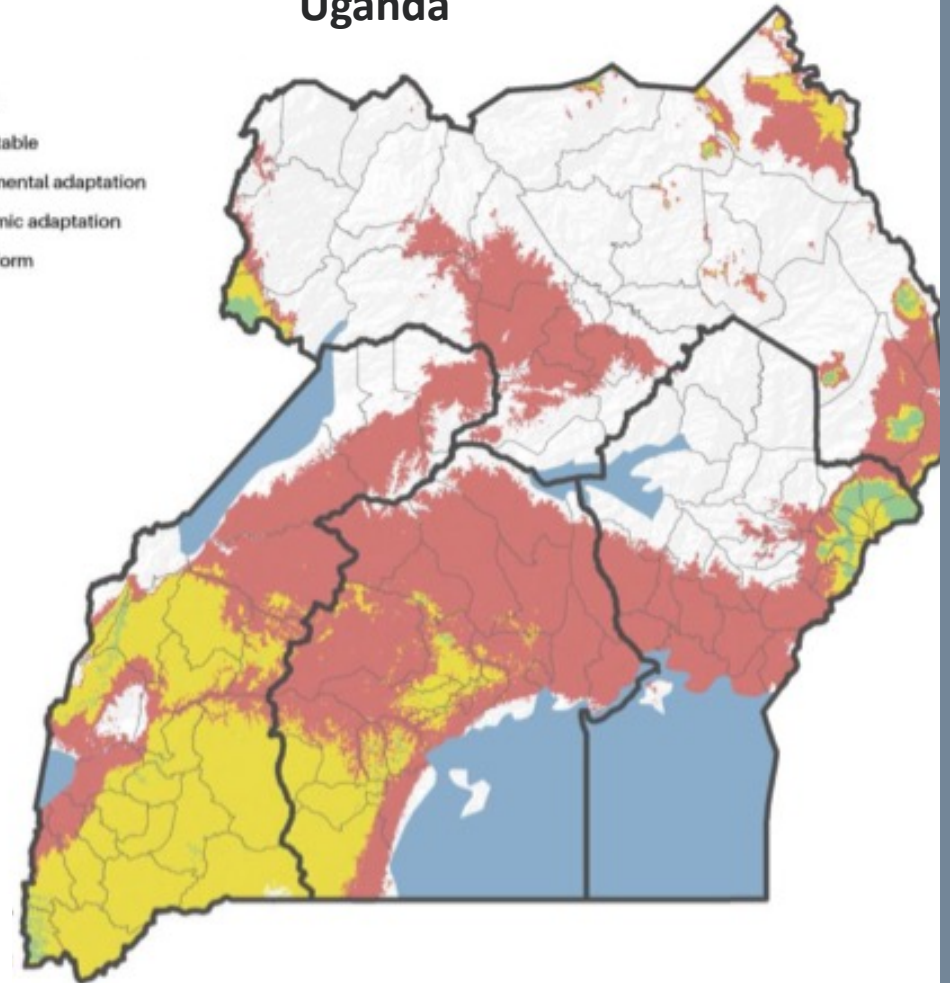


Honduras



Correct Answer: About 45%

Uganda



Correct Answer About 30%

PHASE III

Duration: 2020-2024

Target: 80.000 coffee households



OUR FOCUS COUNTRIES



PROGRAM OVERVIEW

C&C INNOVATION

- Further development of coffee production systems.
- Digital solutions to increase farmers climate adaptive capacity.
- Reduction of direct agricultural greenhouse gas emissions and sequestration of carbon dioxide from the atmosphere.
- Carbon offsetting program in coffee regions.

C&C IMPLEMENTATION

- Training on c&c approach incorporated into holistic livelihood approach.
- Establishment of Climate Smart Coffee Region.

C&C DISSEMINATION

- c&c toolbox.
- Communities of Practice.
- Training of Trainers.